

## Feature

- High Luminous Output Yellow
- Yellow diffused 3mm T-1 Packages
- Pb Free, RoHS compliant
- Wide viewing angle **100** Degree

## SDL-42NSV8D-LT1

## Specification

### Absolute Maximum Ratings

Item	Symbol	Absolute Maximum Rating	Unit
DC Forward Current	$I_F$	20	mA
Peak Pulsed Forward Current ※	$I_{FP}$	60	mA
Reverse Voltage	$V_R$	5	V
Power Dissipation	$P_d$	52	mW
Operating Temperature	$T_{opr}$	-30 ~ +85	°C
Storage Temperature	$T_{stg}$	-40 ~ +100	°C
Solder Dipping Temperature	$T_{sld}$	260°C for 5 sec	

※  $I_{FP}$  = Pulse Width  $\leq$  10 ms, Duty Ratio  $\leq$  1/10

## Electrical / Optical Characteristics

$T_a = 25^\circ\text{C}$

Item	Symbol	Condition	Min	Typ	Max	Unit
Forward Voltage	$V_F$	$I_F=10\text{mA}$		2.0	2.5	V
Reverse Current	$I_R$	$V_R=5\text{V}$			100	$\mu\text{A}$
Luminous Intensity	$I_V$	$I_F=10\text{mA}$	3.8	11	30	mcd
Dominant Wavelength	$\lambda_d$	$I_F=10\text{mA}$	584	587	594	nm
Peak Wavelength	$\lambda_p$	$I_F=10\text{mA}$		591		nm
Spectral Half Width	$\Delta \lambda_{1/2}$	$I_F=10\text{mA}$		15		nm



Electrostatic Sensitive Devices

Reversion 1-3 June 2017  
[www.sanderled.tw](http://www.sanderled.tw)

## Luminous Intensity Bin Table

IF=10mA

Rank name	Min (mcd)	Max (mcd)
3ST	3.8	6.5
3UV	6.5	11
3WX	11	18
3YZ	18	30

※ Tolerance for each bin limit is  $\pm 15\%$

## Color Bin Table

IF=10mA

Rank name	Min (nm)	Max (nm)
H15	584	586
H16	586	588
H17	588	590
H18	590	592
H19	592	594

※ Tolerance for each bin limit is  $\pm 2\text{nm}$

## Note

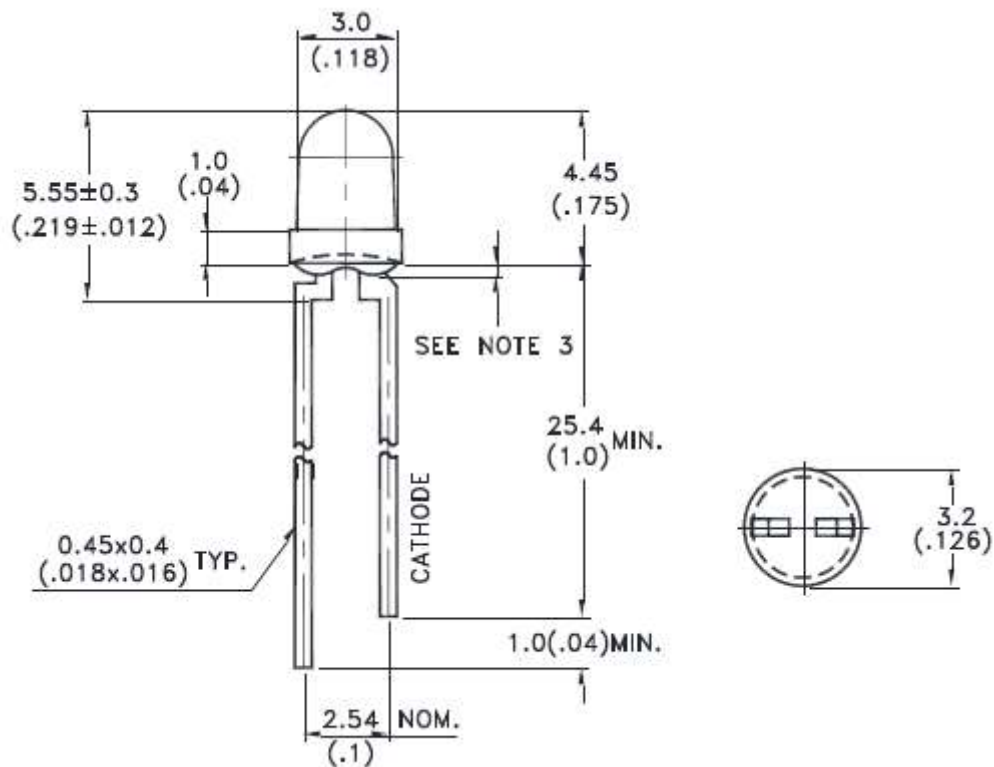
1. One delivery will include several color ranks and  $I_v$  ranks of products.  
The quantity-ratio of the different rank is decided by Sander.
2. Bin Name typed on the Label: IV RANK + Color Rank.
3. Sander has the right to update the information without notice.  
Please double confirm the Spec details before place an order.



Electrostatic Sensitive Devices

## Outline Dimensions

### Lamps without Standoffs



Item	Materials
Resin	Epoxy Resin
Lead Frame	Ag Plating on SPCC

### Note

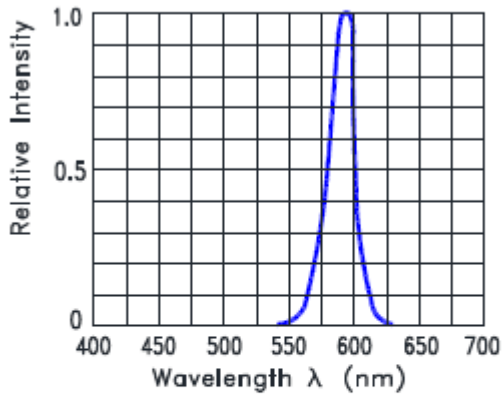
1. All Dimensions are in Millimeters
2. Tolerance is +/- 0.25mm unless otherwise noted.
3. Protruded resin under flange is 1.0mm max.



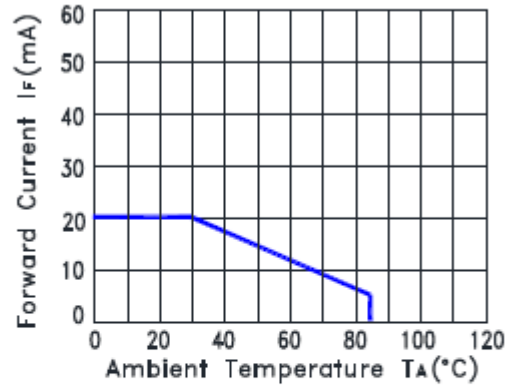
Electrostatic Sensitive Devices

# Electrical-Optical Characteristics

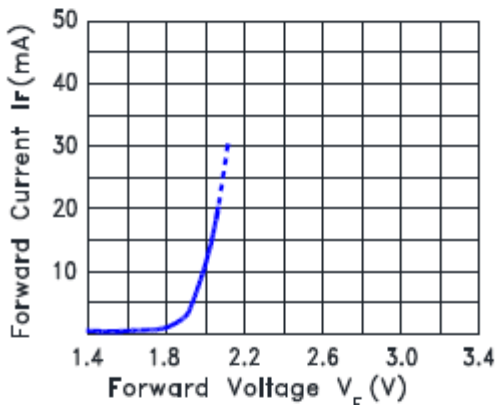
(25°C Ambient Temperature Unless Otherwise Noted)



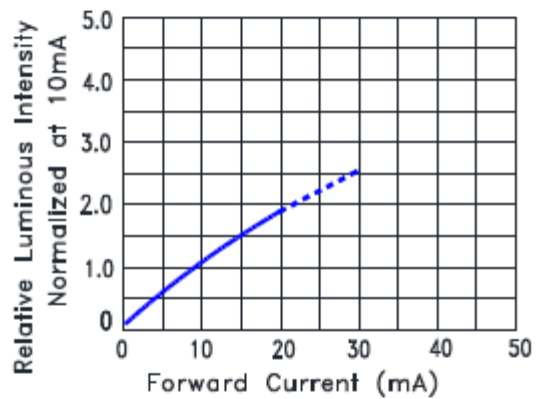
Relative Intensity VS. Wavelength



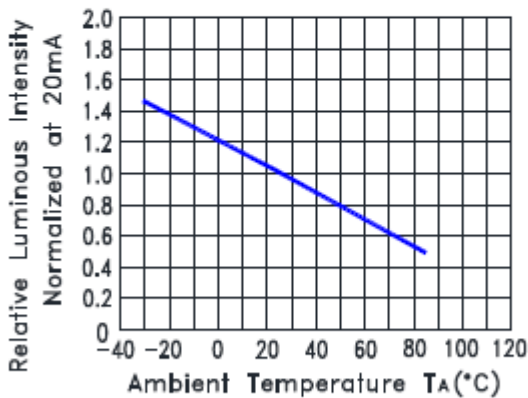
Forward Current Derating Curve



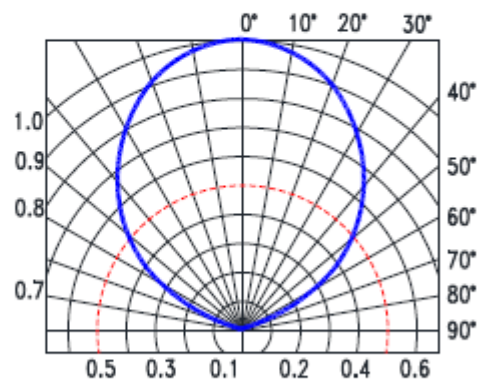
Forward Current vs. Forward Voltage



Relative Luminous Intensity vs. Forward Current



Relative Luminous Intensity VS. Ambient Temperature



Spatial Distribution

