

## Feature

- High Luminous Output Green (AlInGaP)
- Green diffused 3mm T-1 Packages
- Pb Free, RoHS compliant
- Wide viewing angle **100** Degree

## SDL-42NGY8D-LT1

## Specification

### Absolute Maximum Ratings

Item	Symbol	Absolute Maximum Rating	Unit
DC Forward Current	$I_F$	20	mA
Peak Pulsed Forward Current ※	$I_{FP}$	60	mA
Reverse Voltage	$V_R$	5	V
Power Dissipation	$P_d$	52	mW
Operating Temperature	$T_{opr}$	-30 ~ +85	°C
Storage Temperature	$T_{stg}$	-40 ~ +100	°C
Solder Dipping Temperature	$T_{sld}$	260°C for 5 sec	

※  $I_{FP}$  = Pulse Width  $\leq$  10 ms, Duty Ratio  $\leq$  1/10

## Electrical / Optical Characteristics

$T_a = 25^\circ\text{C}$

Item	Symbol	Condition	Min	Typ	Max	Unit
Forward Voltage	$V_F$	$I_F=10\text{mA}$		2.0	2.5	V
Reverse Current	$I_R$	$V_R=5\text{V}$			100	$\mu\text{A}$
Luminous Intensity	$I_V$	$I_F=10\text{mA}$	8.7	15	29	mcd
Dominant Wavelength	$\lambda_d$	$I_F=10\text{mA}$	566	569	574	nm
Peak Wavelength	$\lambda_p$	$I_F=10\text{mA}$		572		nm
Spectral Half Width	$\Delta \lambda_{1/2}$	$I_F=10\text{mA}$		20		nm



Electrostatic Sensitive Devices

Reversion 1-3 June 2017  
[www.sanderled.tw](http://www.sanderled.tw)

## Luminous Intensity Bin Table

**IF=10mA**

Rank name	Min (mcd)	Max (mcd)
L3	8.7	12.6
L2	12.6	19
L1	19	29

※ Tolerance for each bin limit is  $\pm 15\%$

## Color Bin Table

**IF=10mA**

Rank name	Min (nm)	Max (nm)
H06	566	568
H07	568	570
H08	570	572
H09	572	574

※ Tolerance for each bin limit is  $\pm 2\text{nm}$

### Note

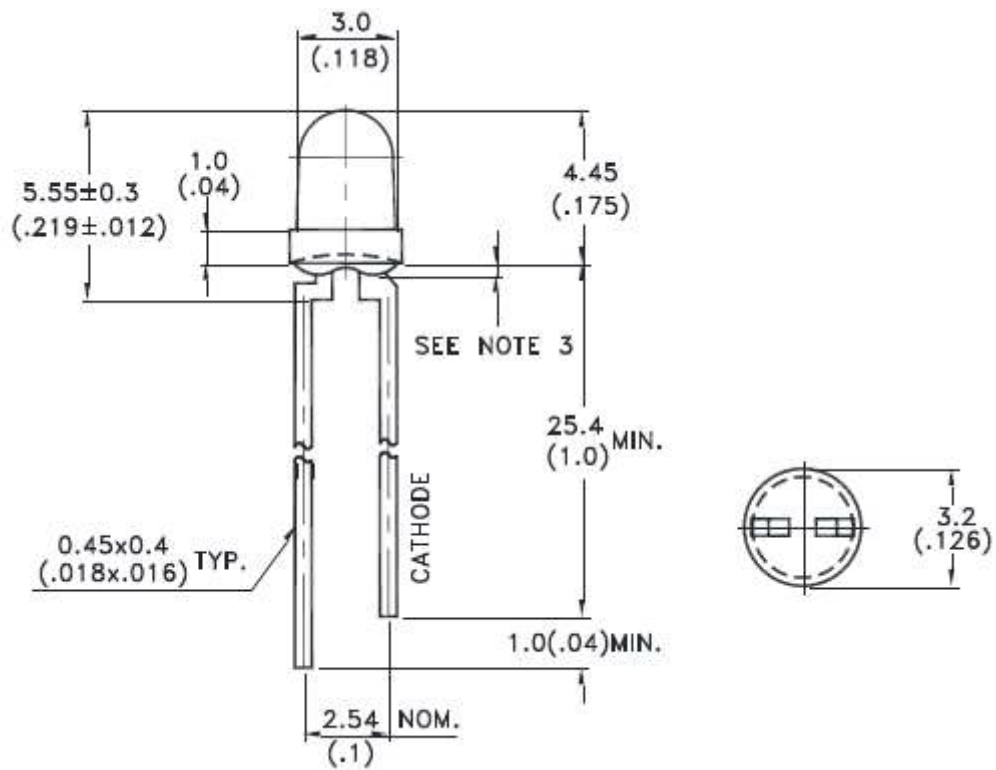
1. One delivery will include several color ranks and  $I_v$  ranks of products.  
The quantity-ratio of the different rank is decided by Sander.
2. Bin Name typed on the Label: IV RANK + Color Rank.
3. Sander has the right to update the information without notice.  
Please double confirm the Spec details before place an order.



Electrostatic Sensitive Devices

## Outline Dimensions

### Lamps without Standoffs



Item	Materials
Resin	Epoxy Resin
Lead Frame	Ag Plating on SPCC

### Note

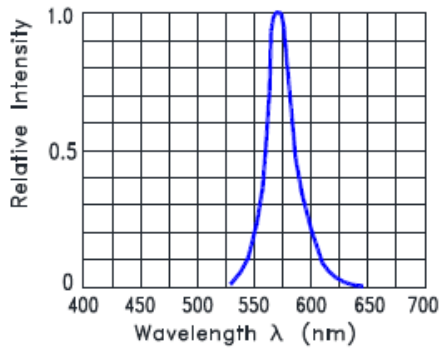
1. All Dimensions are in Millimeters
2. Tolerance is +/- 0.25mm unless otherwise noted.
3. Protruded resin under flange is 1.0mm max.



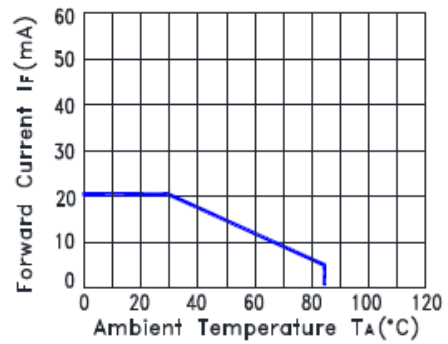
Electrostatic Sensitive Devices

# Electrical-Optical Characteristics

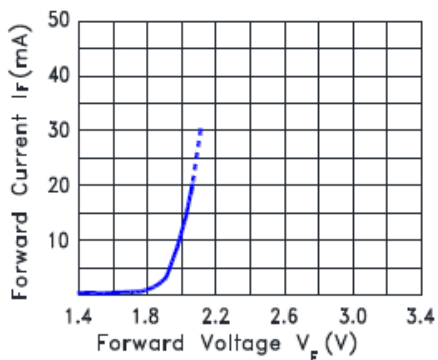
(25°C Ambient Temperature Unless Otherwise Noted)



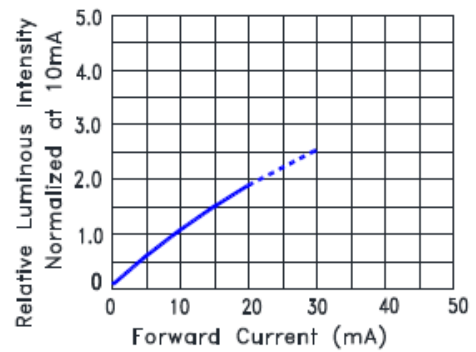
Relative Intensity VS.



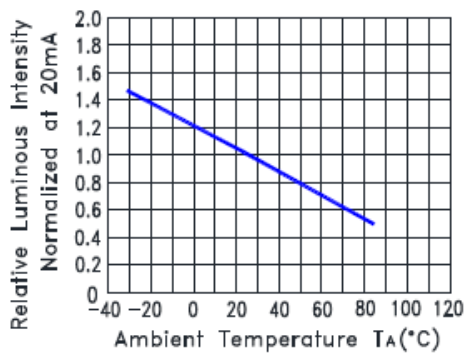
Forward Current Derating Curve



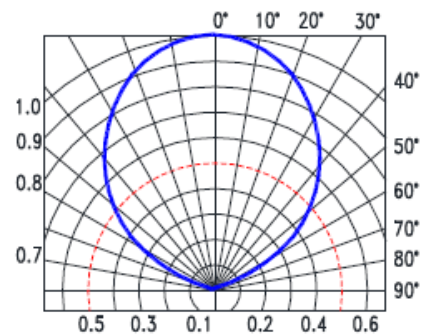
Forward Current vs. Forward Voltage



Relative Luminous Intensity vs. Forward Current



Relative Luminous Intensity VS. Ambient Temperature



Spatial Distribution

